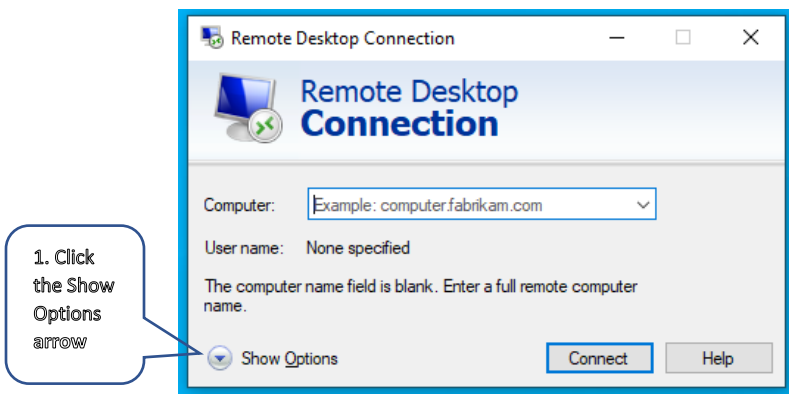


Before you begin

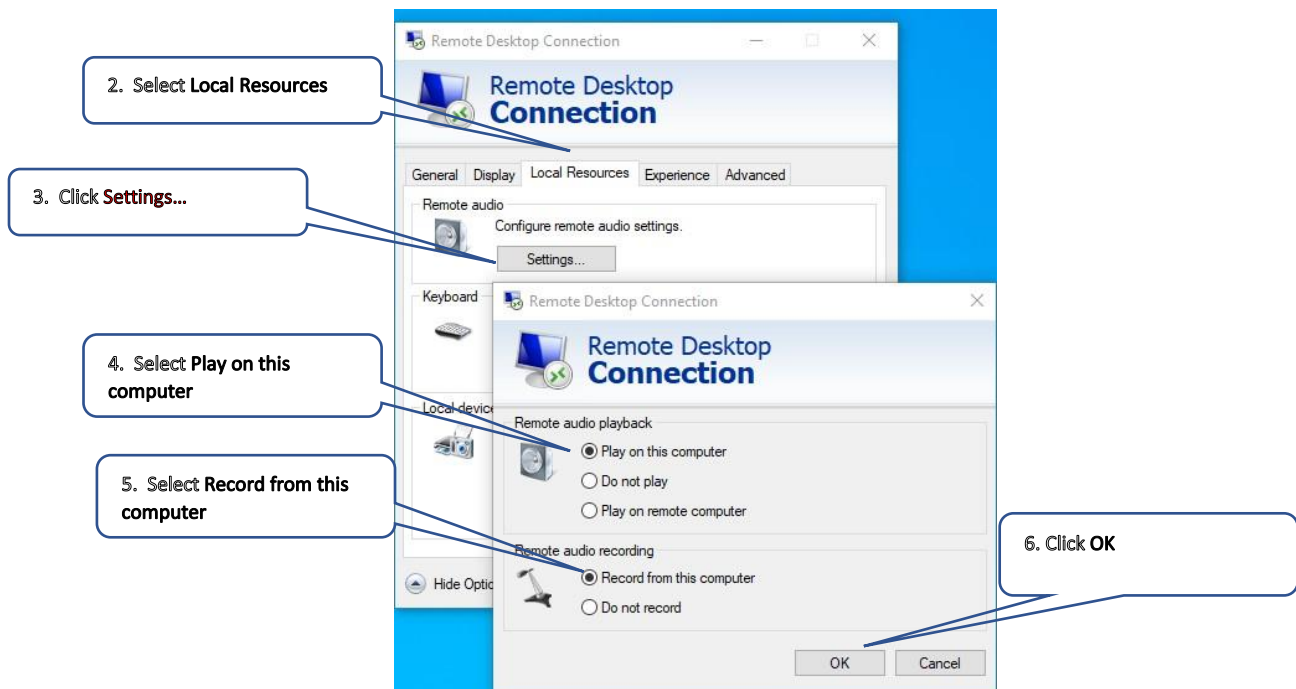
- Please note, your home device must have an audio input and output device:
 - Input
 - Built-in or attached microphone
 - Headset with a microphone
 - Output
 - Built-in or attached speakers
 - Headset

Get started

1. From Remote Desktop Connection, select the **Show Options** drop down



2. Navigate to the **Local Resources** tab
3. Click **Settings...**
4. Select **Play on this computer**
5. Select **Record from this computer**
6. Click **OK**



Configuring Remote Desktop Connection for External Audio Devices

7. Under the Local devices and resources section, select **More...**
8. Select **Ports**
9. Select **other supported Plug and Play (PnP) devices**
10. Click **OK**

